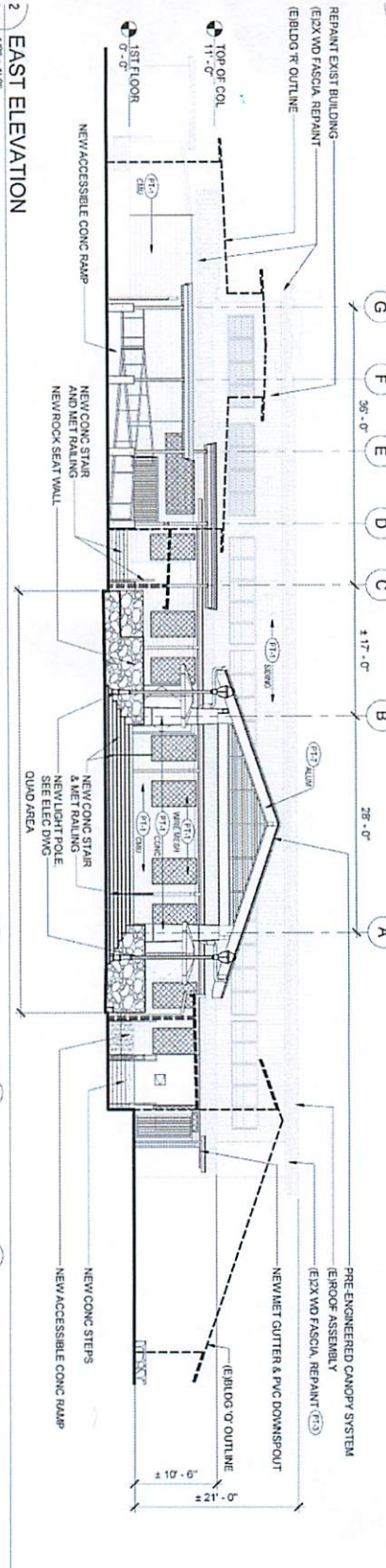
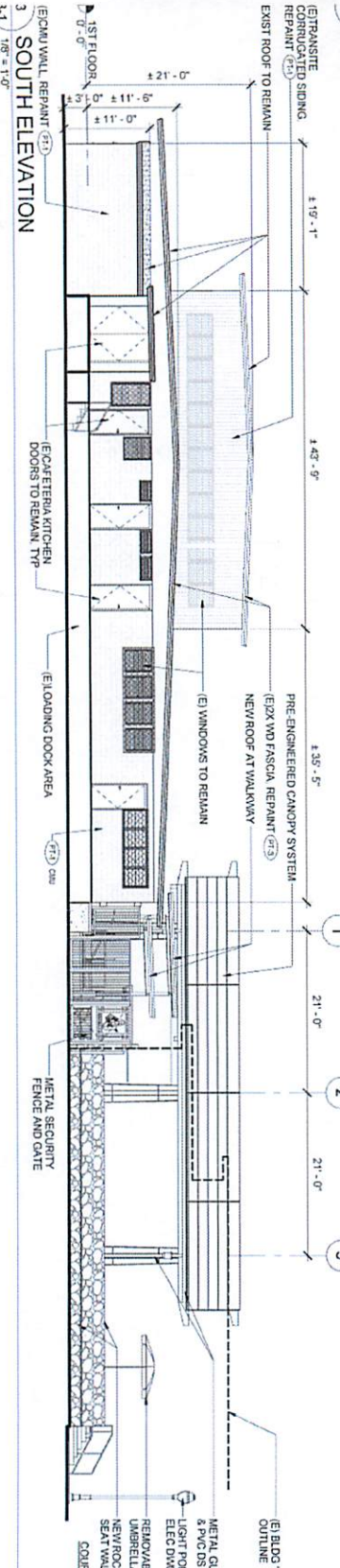


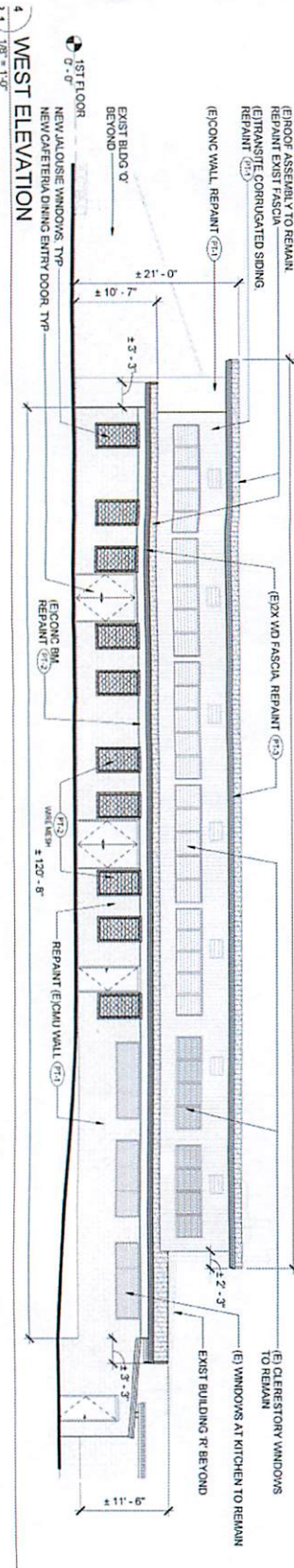
1 NORTH ELEVATION



2 EAST ELEVATION



3 SOUTH ELEVATION



4 WEST ELEVATION

COLOR DESCRIPTION	COLOR / DESCRIPTION	BRAND
PT-1	CHARMING MOUNTAINS #071	BRAND B
PT-2	BUSHED ALUMINUM #145	BRAND B
PT-3	WOODCLIFF LAKE #90	BRAND S
PT-4	GILLO BLAND	BRAND S
PT-5	GOLDEN GROVES #313	BRAND B
PT-6	SOMERSETLE REDDHC-2	BRAND B
PT-7	Bronze	BRAND K

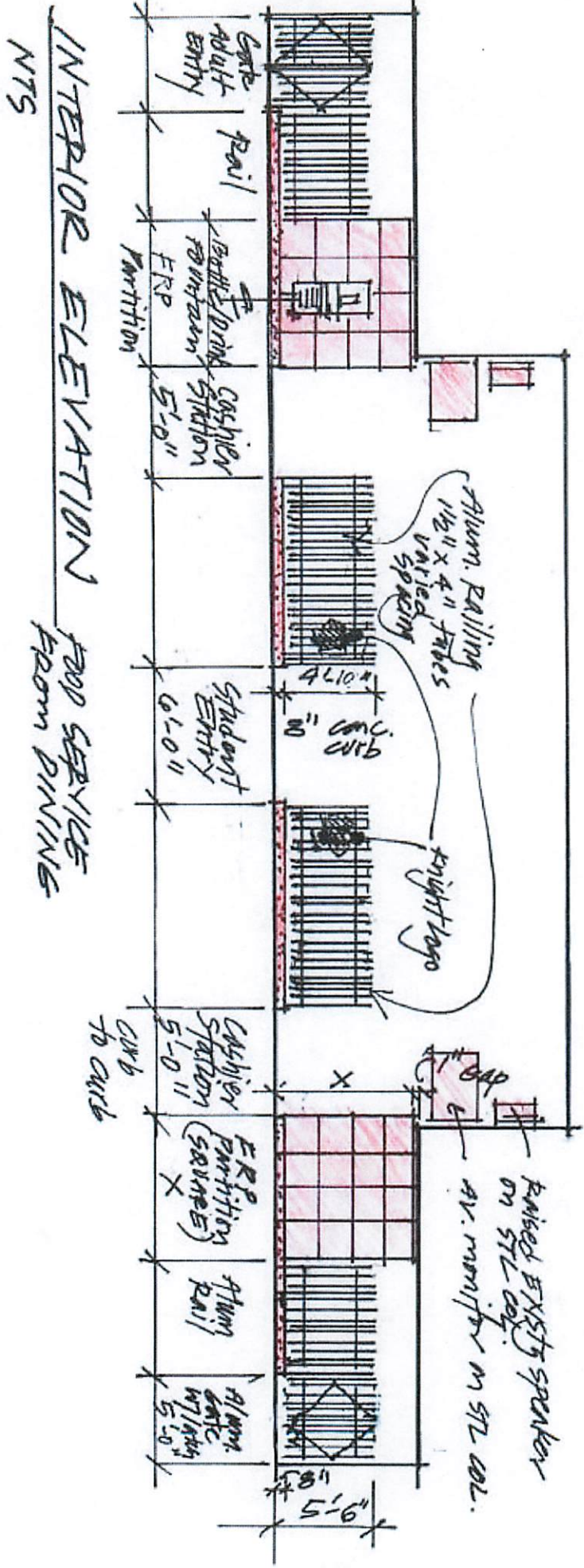
NOTE:  
 1. REPAIR EXISTING BUILDING Z CAFETERIA  
 2. REMOVE & REINSTALL EXISTING WINDOW SECURITY GRILLE UPON REPAIRING  
 3. REPAIR EXISTING DINING LAMIN & CO. W/NEW 1/2" S/D INDICATED



DEPARTMENT OF E  
 STATE OF N.C.  
 JAMES B. CASTLE, HK  
 CAFETERIA EXPY  
 OAHU

W. M. ARCHITECTURE, INC.  
 EXTERIOR ELEV  
 DATE: 05/10/17  
 DRAWN: WMA  
 CHECKED: WMA  
 IN CHARGE: WMA

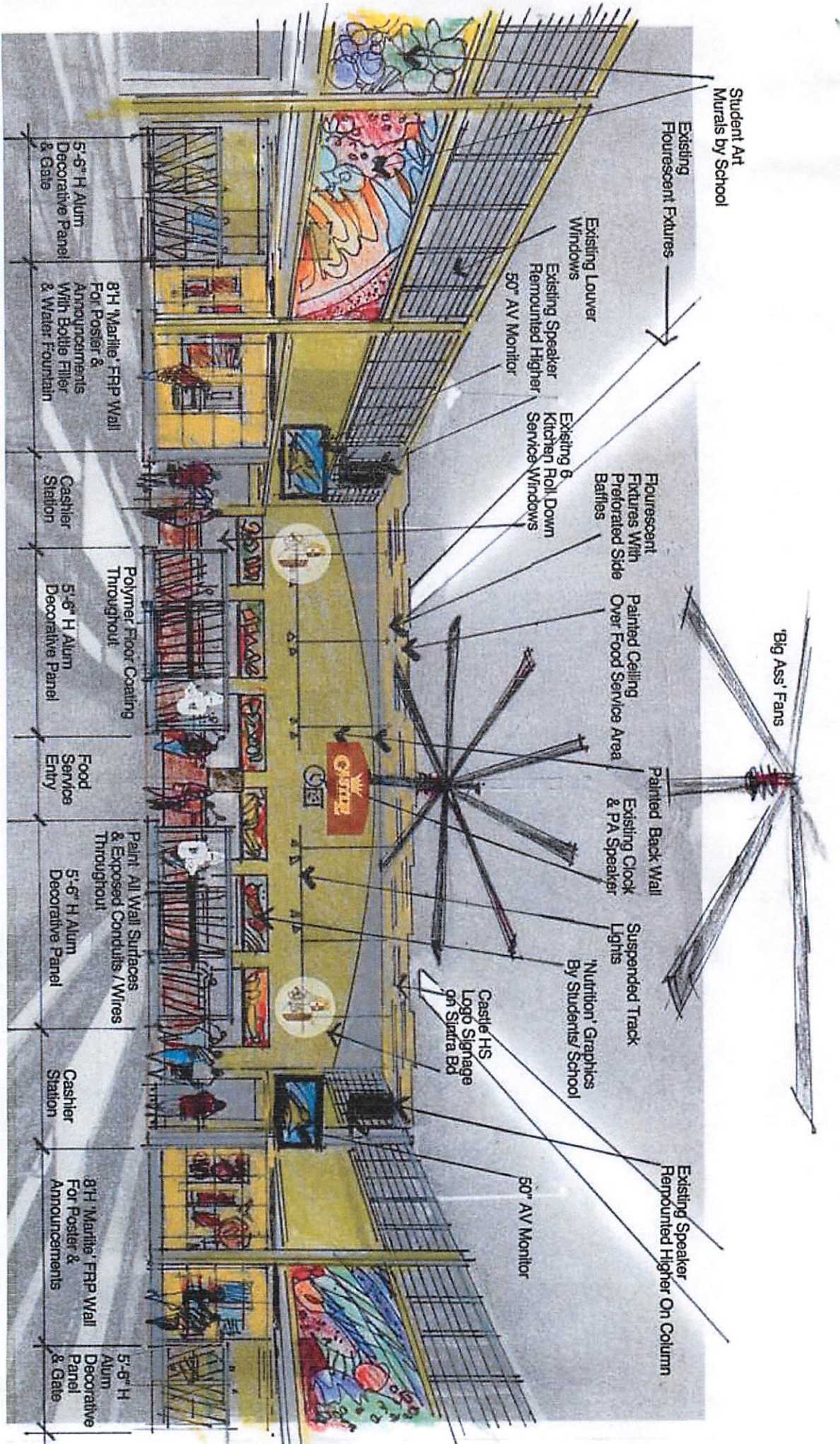
This drawing is the property of W. M. ARCHITECTURE, INC. and is not to be reproduced or used in any way without the written consent of W. M. ARCHITECTURE, INC.  
 W. M. ARCHITECTURE, INC.  
 45 NORTH



INTERIOR ELEVATION **FOOD SERVICE**  
 FROM DINING  
 NTS







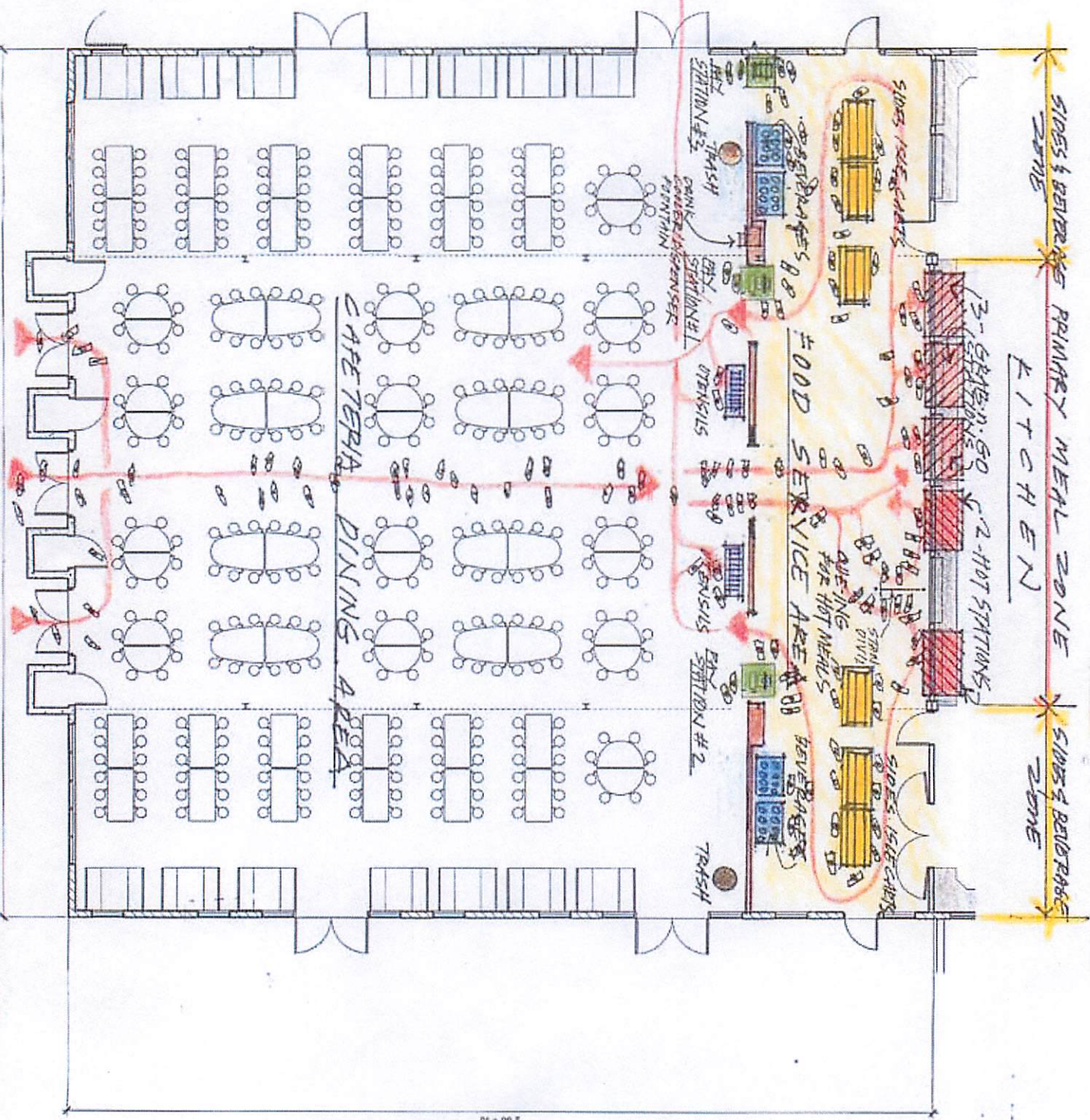


**CASTLE HIGH SCHOOL CAFETERIA - INTERIORS DESIGN SKETCH**

Depicting "Food Court" Character Improvements Agreed Upon With School Cafeteria Manager On February 10, 2017 Meeting For 85% Design Submittal

LEGEND:  
 CIRCULATION  
 FLOW

NEW  
 DINING  
 LAYOUT



Revised Per Input From Christian Lee Tomilta For 6 Side Dish Bars on 19 Dec. 2016  
 FOOD SERVICE AREA LAYOUT DERIVED FROM 5 DEC. 2016 MTS WITH SCHOOL  
 CAFETERIA ENTRANCES (option to space apart bars that could enhance circulation)

